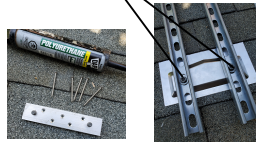
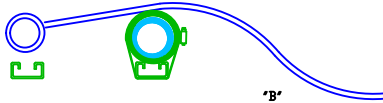
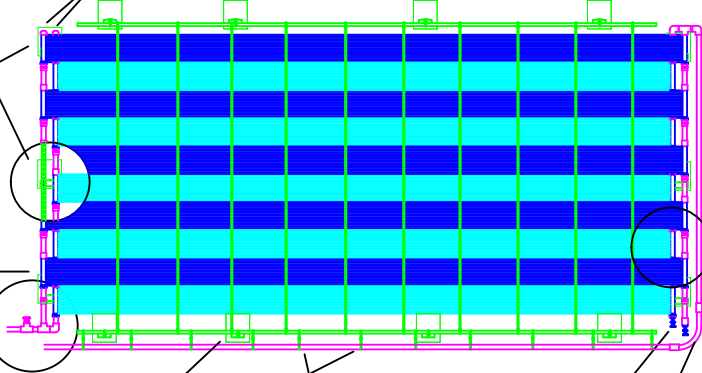


WASHER NUT AND BOLT
ALL SS WITH SS UNISTRUT
ALL HOT DIP GALVANIZED WITH
GALVANIZED UNISTRUT

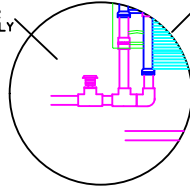


7" ROOF BRACKET
3 PLACES PER 10' UNISTRUT

DO NOT JOIN MANIFOLDS AT FREE ENDS - TO ALLOW FOR DIFFERENCES IN
EXPANSION AND CONTRACTION



VACUUM BREAKER
MOUNT VERTICALLY
ON FEED PIPE

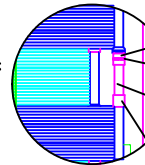


LOOP RETURN PIPING TO
LOWER TOP RAIL WITH
VINYL COATED SS STRAP
AND STRAP CLAMP EVERY
2 FEET



PROVIDE MEANS TO DRAIN
THIS DEAD CORNER.

USE FLEX SPA PIPE TO
ABSORB MOVEMENT FROM
PIPING EXPANSION AND
CONTRACTION AT THIS
CORNER

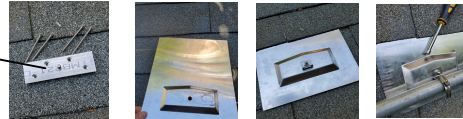


STAGGERED HEADERS

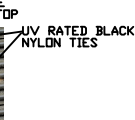
PVC TO HEADER CONNECTIONS
USING 2711 PVC CEMENT NO PRIMER

SLIP COLLAR
2" PIPE 2" LONG
#44 ALL 316 SS HOSE
CLAMP
1.5" INTERMEDIARY PIPE
APPROX 11"
1.5" PVC COUPLING

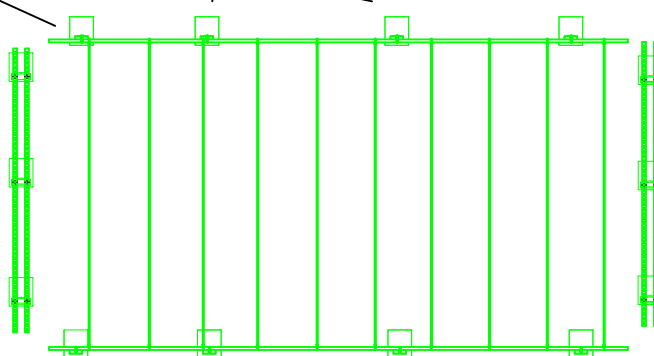
4- #10 SS 2" LONG CSK SCREWS PER ROOF BRACKET



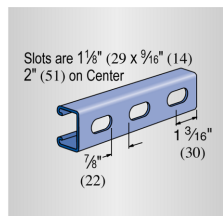
10"x12" FLASHING
STRAP BRACKET ON 1/4" STUD
#20 ALL SS HOSE CLAMP
5" FLAT BAR TYPE 2
CHAIN LINK FENCE TOP RAIL
MAX SPACING 10"
STRAP CLAMP
VINYL COATED SS STRAP
BEHIND FIN TUBES
SPACING 2"



SECURE CHAIN LINK FENCE TOP RAILS EVERY 6' WITH 5" TYPE 2 ROOF
BRACKET, 1/4" SS WASHER, NUT, HOT SUN SS STRAP BRACKET AND #20 ALL 316SS HOSE CLAMP



P4100T - 1-5/8" x 13/16", 14 Gage, Slotted



HOT SUN INDUSTRIES INC UPLAND CA 858 683 0800 www.h2otsun.com		WWW.H2OTSUN.COM/MANUALS.HTML	
		SHINGLE SIDEWAYS SEE MANUAL WWW.H2OTSUN.COM/MANUALS.HTML	
		ECH/SC	NO. DESSIN / DWG NO.
		DATE	Sept 30, 2019
		PAR/BY	KEN WRIGHT
		VER/CHK	