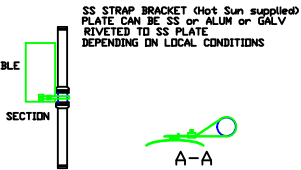
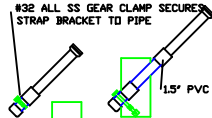


ADJUST LENGTHS OF PVC PIPE SO HEADERS LINE UP WITH EACH COURSE OF TILE
WHEN INSTALLING FIN TUBING LEAVE ENDS OF TILES VISIBLE FROM GROUND LEVEL FOR ESTHETICS



SS STRAP BRACKET (Hot Sun supplied)
PLATE CAN BE SS or ALUM or GALV
RIVETED TO SS PLATE
DEPENDING ON LOCAL CONDITIONS

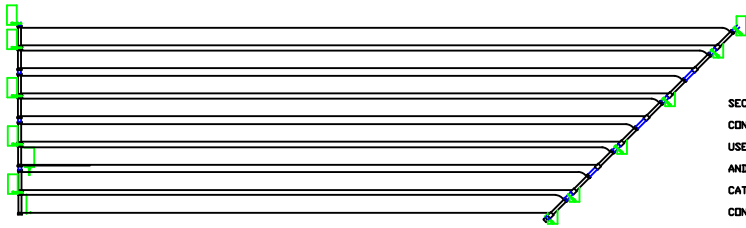


1.5" REMOVABLE COUPLING (Hot Sun supplied)
USE REMOVABLE COUPLINGS OR 1.5" PVC COUPLINGS AT MALE TO MALE CONNECTIONS. LOCATE CONNECTION POINTS AT REMOVABLE COUPLING. IF USING PVC COUPLINGS LOCATE CONNECTION POINTS AT PIPE BETWEEN FEMALE HEADER ENDS.

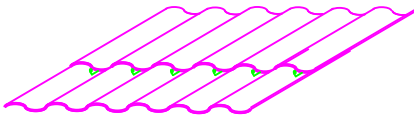
PPA COATED SS STRAP (Hot Sun supplied)

HOT SUN HEADER MANIFOLD GLUES TO PVC SAME AS PVC PIPE. THIS MANIFOLD IS STYRENE. IT REACTS WITH PVC CEMENT AGGRESSIVELY. LET JOINTS DRY WITH PLUMBING OPEN 24 HOURS BEFORE SEALING IT UP OR PUMPING WATER THROUGH

BEND RIVETTED PLATES TO CONFORM TO TILE
LIFT TILES WITH PRY BAR OR SCREWDRIVER
SLIP RIVETTED PLATES UP BETWEEN TILES
AND APPLY LEPAGES PREMIUM ADVANCED
CONSTRUCTION MASTIC TOP AND BOTTOM TO
LOCK TILES TOGETHER AND SECURE PLATE TO ROOF

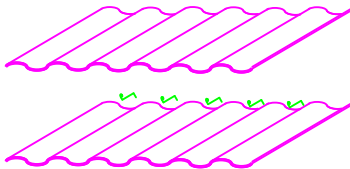
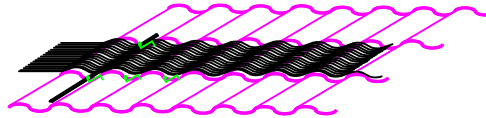


SECURE FIN TUBING TO ROOF AT EACH TROUGH IN TILES SUCH THAT EACH CONNECTION POINT SECURES NO MORE THAN 1.2 SQUARE FEET OF FIN TUBING. USE A 7' LENGTH OF 12GA SOLID COPPER WIRE BENT AT ONE END. LIFT TILE AND INSERT BENT END AND ROTATE 90 DEGREES SO BENT END IS DIRECTED DOWN CATCHING ON UPPER EDGE OF TILE BELOW. APPLY LEPAGES PL PREMIUM ADVANCED CONSTRUCTION MASTIC BETWEEN TILES AT THESE CONNECTION POINTS TO LOCK TILES TOGETHER.



7' LONG PIECE OF 12 GA COPPER WIRE, BLACK PVC COATED

TIE ONE TUBE WIDE POWERSTRIP MATERIAL AT TROUGHS IN TILES



HOT SUN INDUSTRIES LTD. Burnaby BC Canada 778-300-1803		POWERSTRIP PSG 135	
TILE ROOF MOUNT SOLAR POOL HEATER			
ECH/SC		NO. DESSIN / DWG NO.	GR/SIZE
DATE			
PAR/BY	KEN WRIGHT		
VER/CHK			