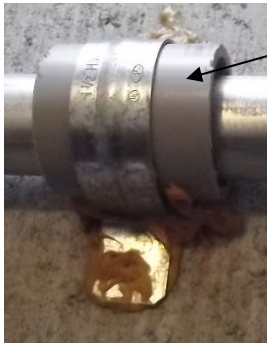


DETAIL "T" PIPING SUPPORTS



MOUNTING 4" (100mm) AND 2.5" (62mm) PLUMBING IS DONE VIA 1.5" X 8" X 16" (37x240x400mm) CONCRETE PATIO STONES. CONCRETE IS GLUED TO THE ROOF SURFACE IN THE CASE OF THE TORCH ON MEMBRANE ROOF OVER THE MECHANICAL ROOM USING LEPAGES PREMIUM ADVANCED CONSTRUCTION ADHESIVE. SEE TECHNICAL DATA SHEET. PIPE SUPPORT SPACINGS ARE EVERY 4' (1200MM) MAX. ON THE GRAVEL ROOF THESE BALLASTS ARE SET FULLY INTO THE GRAVEL WITH NO GRAVEL UNDERNEATH.



SLIP COLLARS ARE USED ON ALL PLASTIC PLUMBING IN SOLAR HEATERS TO ALLOW MOVEMENT OF PIPING WITH TEMPERATURE CHANGE. SLIP COLLAR IS A SHORT PIECE OF PVC OR ABS PIPE ONE SIZE LARGER THAN PLUMBING PIPE SIZE. IT IS ATTACHED TO THE CONCRETE PAD USING LEPAGES PREMIUM ADVANCED CONSTRUCTION ADHESIVE. SURFACE AREA OF GLUED CONTACT EQUALS PLUMBING PIPE NOMINAL DIAMETER TIMES 3 INCHES.

PIPING CAN BE ELEVATED USING AS MANY AS 3 CONCRETE BLOCKS GLUED TOGETHER OVER FULL 8" X 16" (240mm X 400mm) AREA.

P1100 HD GALV OR P4100 PG UNISTRUT IS USED TO ELEVATE PLUMBING OFF CONCRETE PADS WHERE NECESSARY TO ACHIEVE PLUMBING SLOPE, DRAINAGE AND AIR RELEASE.

WHEN ELEVATING PIPING THIS WAY GLUE TO CONCRETE PAD USING 8" X 6" (200mm X 150mm) GALVANIZED STEEL PLATES.



HOT SUN INDUSTRIES LTD. Burnaby BC Canada 778-300-1803		PLUMBING	
		TORCH ON ROOF PIPING SUPPORTS POWERSTRIP PSG135 SOLAR COLLECTORS	
ECH/SC		NO. DESSIN / DWG NO.	GR/SIZE
DATE	JUNE 11, 2013	DWG BON 10-I	
PAR/BY	KEN WRIGHT		
VER/CHK			