

DETAIL "E" CROSSBARS

CROSSBARS AND EDGE RAILS ARE STANDARD 1.375"OD GALVANIZED CHAIN LINK FENCE TOP RAIL WITH SPIGOTTED ENDS. ALL CUT ENDS TO BE PAINTED WITH ZINC BASED PAINT. EXAMPLE "GALVACON"

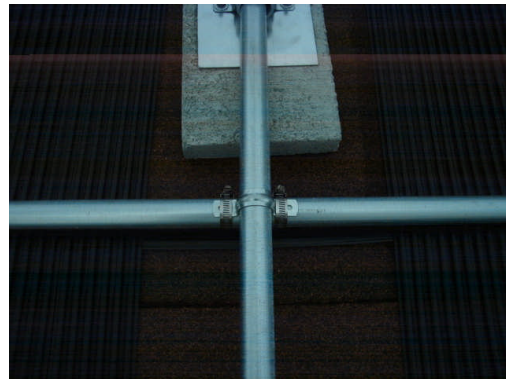


GALVANIZED TWO HOLE CONDUIT CLAMP FOR 1" EMT CONDUIT. NOTE:

SECURE CONDUIT CLAMP AROUND EDGE BAR USING #20 ALL SS GEAR CLAMP

CROSSBARS SPACED MAXIMUM 10 FEET APART. ON ADJACENT BANKS OF COLLECTORS THESE CROSSBARS CAN CONTINUE BY JOINING SPIGOT TO OPEN END. BEND CROSSBARS TO SHAPE TO MATCH ROOF SURFACE . SPACE CROSSBAR SLIGHTLY ABOVE OR IN CONTACT WITH POWERSTRIP SOLAR COLLECTOR

GLUE STRIPS SHOULD BE USED TO KEEP POWERSTRIP MATERIAL ARRANGED. SEE POWERSTRIP INSTALLATION MANUALS AND WEB SITE WWW.H2OTSUN.COM
GLUE STRIPS ARE 2 TUBE WIDE POWERSTRIPS TUBE SIDE DOWN ON ROOF GLUED TO POWERSTRIPS WITH LEPAGES PL PREMIUM CONSTRUCTION MASTIC. DO NOT GLUE THE GLUE STRIP TO THE ROOF



HOT SUN INDUSTRIES LTD. Burnaby BC Canada 778-300-1803		FLAT ROOF BALLASTED MOUNTING	
		CROSSBAR CONNECTION TO EDGE RAIL DETAIL POWERSTRIP PG135 SOLAR COLLECTORS	
ECH/SC		NO. DESSIN / DWG NO.	GR/SIZE
DATE	DEC 15. 2013	DWG FB2U-E	
PAR/BY	KEN WRIGHT		
VER/CHK			